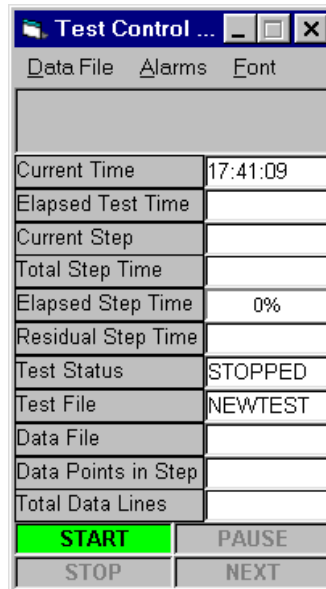


## Test Control Panel

Having saved the Test Sequence File, it can now be run from the **Test Control Panel** window. This window is always in view and on top of all other open windows:



### Data File

To create a Data File use **Open Data File** and type a new name and press Enter to accept. The Data File name will appear in the Data File box on the Control Panel.

**View Data File in Excel** provides a hot-link to Excel and offers a pick-list of available Data Files.

The default directory is C:\compendx\data and the data is stored as \*.csv format (comma separated variables). This is recognised by Excel as a "native" file format and does not require the Import Wizard.

### Alarms

The Alarms tool bar allows all alarms to be disabled. When disabled, a message appears in the field at the top of the Control Panel Window.

### Font

This allows the user to adjust the Font Size of the text used in the Control Panel.